

# 600MM SQUARE D400 DUCTILE IRON COVER & FRAME

## Product Data Sheet

### PRODUCT CODE - 600600D400

Material Grade/s | Spheroid Graphite Iron Grade

EN-GJS-500-7 to BS EN 1563:2011

Paint Coating | Temporary Bitumen-based to BS 3416:1991

Clear-Opening Dimensions [mm] | 600 x 600

Over Base Dimensions [mm] | 740 x 740

Frame Depth Dimensions [mm] | 100

Depth of Cover in Frame [mm] | 60

Weight | 64kg [set]

Frame Pressure Bearing Area [N/mm<sup>2</sup>] | 2.6

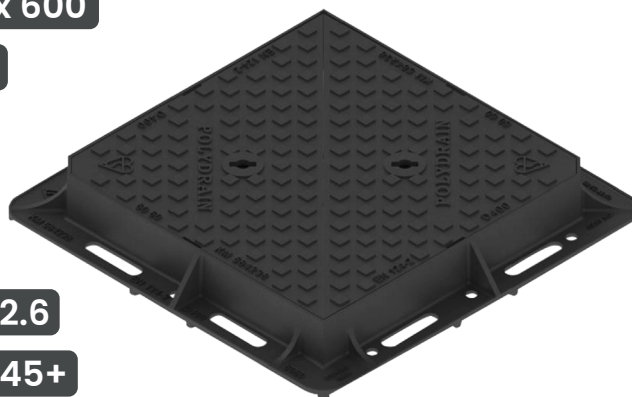
Polished Skid-Resistance Value [PSRV] | 45+

Load Rating Classification | D400 [40 tonnes]

Certification | BSI Kitemark Certified to BS EN 124-2:2015

Key Hole | Integral Lifting Key Hole

Cover | Non - Rock 3 Point Suspension Cover



Installation guidance and assistance is available  
For further information, please call 0121 552 8887

[info@polydraincivils.com](mailto:info@polydraincivils.com) | [www.polydraincivils.com](http://www.polydraincivils.com)

